



GEARMATE
LOADED FOR LIFE

PICK UP TRUCKS,
SUV AND VAN STORAGE
SOLUTIONS



**MADE IN
BRITAIN**



All images are for illustrative purposes, the final products may vary slightly dependent on your vehicle manufacturer and model.



ABOUT US

Gearmate is a British designer, manufacturer and supplier of 4x4 accessories and load bed storage solutions.

Our truck bed sliding trays and sliding drawers are designed to be practical and stylish while offering secure storage and easy access to all of your tools and equipment.

Gearmate's mission is to design, test, develop and manufacture high quality access and storage solutions to 4x4 vehicles.

At the forefront of our philosophy is the genuine desire to develop practical, hard wearing and stylish accessories that help people work and play smarter.



GEAR DRAWERS

Gearmate's range of drawers revolutionise your load space. Items can be stored safely and efficiently, ideal for professional and leisure use.

All Gear Drawers have an incredible 100% extension enabling quick and easy access to all your items. Each drawer system comes fitted with dividers to ensure your load stays secure and organised, saving you time from needlessly searching.

Choose between our Single or Twin drawers without compromising your load space. Our drawer systems are designed to be tough, offering up to 150kg capacity per drawer and 800kg capacity on top of the deck.

You can choose between our 226mm height drawer (twin configuration), 300mm height drawer (single and twin configuration) or 400mm height drawer (single and twin configuration). All drawer systems come fitted with 3 dividers, and additional can be purchased.



If you require additional security features or foam inserts to personalise your system please contact our sales team.







Gearmate offer a range of Gearslides weighing between 60 – 80kg, all easy to install. With 800kg load capacity when locked in place and 400kg capacity when extended, your load will be safely secured.



GEARSLIDE

The Gearslide offers an effective solution to accessing your load space.

Never crawl into the back of your bed again, your entire load space is brought to you with the Gearslide's 75% extension.

It can be fitted with or without a bedliner with no drilling required and has a hand operated locking lever with 4 incremental locking positions.

Re-positionable eye bolts connecting to side extrusion rails, ensure your load can be fully secured. Gearslide's are designed to be fully compatible with all Gearmate's range of accessories.

All Gearslide's are finished with a durable rubber chequer plate surface.



T SLIDE

Shaped to the contours of each truck bed, Gearmate's T-Slide utilises the maximum width of the available bed area.

The T-Slide is finished with durable, rubberised chequer plate for easy cleaning. Raised sides with multiple anchor points are ideal for bungee cords and tie downs, keeping your load in place.

Three locking positions, push button handle, 75% extension, 400kg Payload when extended. No drill installation, quick removable slide, solid steel sub-frame.

Available for all major truck brands in double cab and selected cab configuration.



- Maximum width slide
- Multiple anchor points
- Rubberised easy clean surface



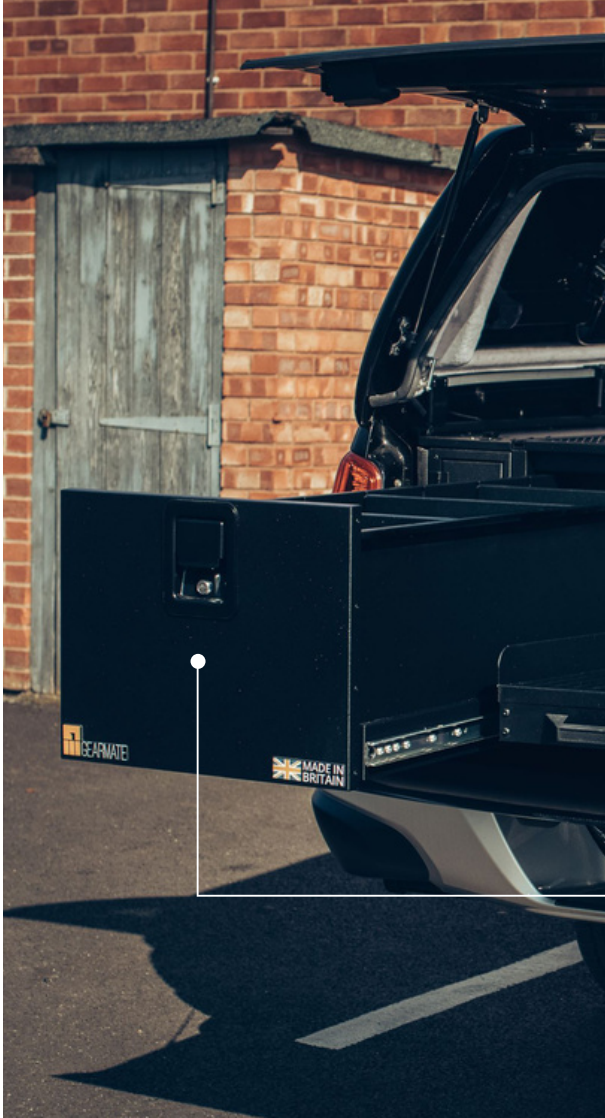
SPLIT SYSTEM

The Gearmate Split System gives the user maximum versatility.

Working with our 300MM or 400MM Gear Drawers, completed with a narrow slide makes up the Gearmate split system, giving you the best of both worlds.


Keeping your items secure on the single lockable drawer while storing bulkier items on the top of the slide.

Discounted prices available for trade and fleet businesses.





Gearmate can bespoke your "fleet" system to exactly meet your needs. Space utilisation and accessibility can be paramount and our design team can always find a solution.



Single Drawer system offering
90kg capacity.

Optional telescopic drawer
extend up to 1340mm for
discreet gun storage.



SUV'S

Up to 100% extendable drawer with adjustable drawer dividers, we have created the perfect system to fit in your SUV.

Optional telescopic storage compartment with lockable door, ideal for guns. Light weight aluminium construction with rubber anti-slip surface. Compatible with our range of dog boxes and narrow slide to make the most of your SUV.

Check out our accessories range for more options.





- Protect your tools from theft
- Front and side drop down handles
- Internal LED light
- Tested & certified locking system
- Reinforced lid
- Sleek black design, discreet and secure
- Functional design to access tools at speed

GEAR VAULT

LOADED . LOCKED . SECURED

Protect your van from tool theft with the Gear Vault, a versatile solution for the safe and secure storage of your valuable work tools.

The Gear Vault provides a secure and compact storage solution with a safety lock which has been tested and certified to give you peace of mind that your tools are safe and secure.

The stylish design includes innovative manufacturing technology, made with the highest quality materials.

The Gear Vault has a range of special features including integrated LED lighting positioned within the inside lid to help locate your tools conveniently and efficiently.

£399 + VAT (WITH LIGHT)
£339 + VAT (WITHOUT LIGHT)



VAN STORAGE

Gearmate's modular van racking and storage systems provide a versatile solution for the safe and secure storage of your gear.

Side Racking

Manufactured from black powder coated aluminium, Gearmate's racks offer a lightweight non-corrosive solution to keep your everyday items in place. Gearmate Racks can be fitted as a stand-alone item or alongside our Bulkhead Storage System and variety of Drawers.

Bulkhead Storage System

Offering the best of both worlds our UK manufactured Bulkhead Storage System comprises of 4 shelves, 2 lockable storage cupboards and a 300mm deep lower drawer. Secured to the vehicle's bulkhead, the cupboards and drawer can be accessed via the side door with access to the racks through the rear.

Deck Mounted Drawers

Gearmate Drawers are the most versatile systems on the market. Available in a range of depths, our twin or single drawers offer 100% extension. Choose between Heavy Duty or Standard drawers.



- Compatible with Ford Custom & Volkswagen T5/T6
- Heavy Duty Twin Drawer: Items can be stored safely and efficiently (£1,450 + VAT)
- Bulkhead Drawer, Locker & Rack: Provide additional storage options (£649 + VAT)
- Rack: Provide additional storage options and security (£499 + VAT) each

Optional false, raised floor for extra storage, ideal for items such as piping or cabling as an added extra: POA.



ISUZU D MAX

ISUZU D Max Accessories 2021

Gearmate carries a vast array of ISUZU D-Max accessories and storage solutions, designed and produced solely in the UK, which will revolutionise your 4X4 load bed such as:

- ISUZU D-Max Drawer system
- ISUZU D-Max Bed Slide
- ISUZU D-Max Dog Box
- ISUZU D-Max Tool storage
- ISUZU D-Max Gun Drawer

Compatible with all ISUZU D-MAX models:
DL20 . DL40 . V-Cross . XTR . UTILITY



OEM Approved Accessory Suppliers for UK Leading Retailers Isuzu

We are OEM Approved Accessory Suppliers for the UK Leading Retailers Isuzu. Our Isuzu D-Max accessories have been engineered to a high specification using aerospace and automotive technology. They make use of aluminum and composite materials to make them as light weight yet strong and durable as possible.



GEAR DRAWERS

From **£1,150 + VAT**

- Gear Drawers have an incredible 1200mm extension
- Drawer dividers are fitted to ensure your load stays secure and organised Up to 800kg
- loading capacity on each drawer system deck
- Bespoke options, foam inserts and 4x4 accessories available



GM226 TWIN DRAWERS

£1,150 + VAT

- 1030mm x 1345mm x 226.5mm (Width x Depth x Height)
- Internal: Twin – 399mm x 1300mm x 195mm
- 75kg capacity / 400kg deck capacity
- Wooden deck with heavy duty rubber finish
- Only available in twin

GM300 TWIN DRAWERS

£1,150 + VAT

- 1030mm x 1345mm x 300mm (Width x Depth x Height)
- Internal: Twin – 399mm x 1300mm x 210mm
- 75kg capacity / 400kg deck capacity
- Wooden deck with heavy duty rubber finish
- Only available in twin

HEAVY DUTY GM300 DRAWER

Single: £1,350 + VAT | Twin: £1,450 + VAT

- 100mm x 1345mm x 300mm (Width x Depth x Height)
- Internal: Twin – 399mm x 1300mm x 195mm
- 150kg drawer capacity / 800kg deck capacity
- Wooden deck with heavy duty rubber finish
- Available in single and twin

HEAVY DUTY GM400 DRAWER

Single: £1,450+ VAT | Twin: £1,550 + VAT

- 1073mm x 1345mm x 401.5mm (Width x Depth x Height)
- Internal:
Single – 875mm x 1300mm x 295mm
Twin – 399mm x 1300mm x 295mm
- 150kg drawer capacity. Deck: Twin 800kg / Single 400kg





SPLIT SYSTEM | £1,850 + VAT

- Drawer & Slide & Locking pods
- Items can be stored safely and efficiently
- 400mm external height Gear Drawer completed with a narrow slide



T SLIDE | £850 + VAT

- 1290 mm x 1340 mm x 100mm / 175 mm (Width x Depth x Height) – sizes vary from vehicle
- 800kg load rating when closed
- 400kg capacity extended load rating
- Rubber deck for easy clean and maintain



GEARSLIDE | £850 + VAT

- 1024mm x 1326mm x 136mm (Width x Depth x Height)*
- 800kg load rating when closed
- 400kg capacity extended load rating
- Rubber Deck
- *Sizes vary from vehicle



GEARSLIDE TOP | £750 + VAT

The Gearslide top is compatible with the drawer's systems. It gives you the maximum access to your load space with 75% extension, 400kg capacity, 4 locking positions for security and safety release catch to open and close.



NARROW SLIDE | £550 + VAT

With 75% Extension, 200kg Load Capacity, a single hand operation, multiple locking positions for increased security.

Dimensions: 550mm x 1326mm x 136mm (Width x Depth x Height)



RACKING | £330 + VAT (per rack)

Designed to give maximum access to your gear through gull wing windows. With 60kg shelf load capacity and offside and nearside configurations available for each.

Dimensions: GM700- 400 x 980 x 700 GM600- 400 x 980 x 600 GM500- 400 x 980 x 500



RACKING WITH LOCKER | £360 + VAT (per rack)

Designed to give maximum access to your gear through gull wing windows. Additional locking storage.

Dimensions: GM700- 400 x 980 x 700 GM600- 400 x 980 x 600 GM500- 400 x 980 x 500





DOG BOX | **±600+ VAT**

- Width x Depth x Height (Lid Open/Lid Closed) (mm)
- 670 Dog Box: 485 x 950 x 670/540
- 600 Dog Box: 485 x 950 x 600/540
- 550 Dog Box: 485 x 950 x 550/490
- Compatible for GM226 and GM300 Drawers, Gearslide and T Slide.



DOUBLE DOG BOX | **±960+ VAT**

- Width x Depth x Height (Lid Open/Lid Closed) (mm)
- 670 Dog Box: 485 x 950 x 670/540
- 600 Dog Box: 485 x 950 x 600/540
- 550 Dog Box: 485 x 950 x 550/490
- Compatible for GM226 and GM300 Drawers.
- Compatible for Gearslide and T Slide.



HAMMOCK | **±240 + VAT**

- The Gearmate Hammock prevents your gear from moving around.
- Compatible with Gearslide, Gear Drawers, Gearslide Top and SUV Drawers
- Width x Depth x Height (mm)
- 930 x 400 x 240

CORE ACCESSORIES



INFILL PODS | £240 + VAT

The Gearmate Infill-Pods work off the side of your Gear Drawers, to tidy up your load space and give additional storage options.

Sizes vary depending on drawer/truck. Only available with Gear drawers.



TAILGATE GAP FLAP | £95 + VAT

Covers the gap between the truck bed and tailgate, preventing items from dropping into the gap. To fit, the user must have infill pods.

Sizes vary depending on truck. Only available with Gear Drawers and infill pods.



LOCKING PODS | £300 + VAT

The Gearmate Infill-Pods work off the side of your Gear Drawers, to tidy up your load space and give additional lockable storage options. Available with front locking or top locking pods.

Sizes vary depending on drawer/truck. Only available with Gear drawers.



WHEEL ARCH SURROUNDS | £200 + VAT

The maximum height surrounds with an added lip to extend over your wheel arch, giving you storage space.

Sizes vary depending on drawer/truck. Only available with the Gearslide.



SUV RANGE

DEFENDER SYSTEM

- Land Rover > Defender 90 > 1990 – 2016
- Land Rover > Defender 110 > 1990 – 2016



DEFENDER DRAWERS WITH LOCKING POD

£880 + VAT

- Sizes vary from vehicle
- 100% extension lockable drawer
- Adjustable drawer divider
- Rubber anti-slip deck surface
- Locking Pod for extra secure storage

DEFENDER SLIDE

£400+ VAT

- External Dimensions: 623mm x 1000mm x 166mm (Width x Depth x Height)
- Deck Area: 597mm x 953mm (Width x Depth), Deck: 94mm (Height)
- 75% load bed extension
- 200 kg extended load capacity
- Single hand opening mechanism
- Multiple locking positions

DEFENDER DOG BOX

£450 + vat

- 450mm x 750mm x 675mm (Width x Depth x Height)
- Option 1: Dog Box mounted on Pod
- Option 2: Dog Box mounted on Drawer, if there is no slide installed
- Locking Door
- Quick attachment and removal to the drawers

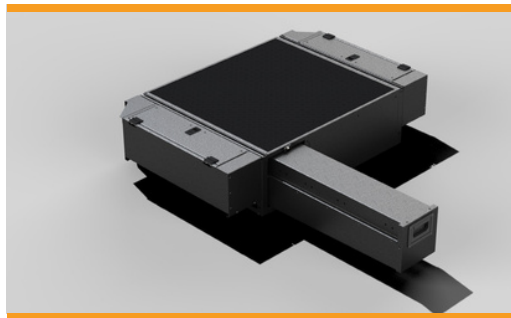
DEFENDER RACKING

£200 + VAT

- 200mm x 865mm x 700mm (Width x Depth x Height)
- Only available on left hand side
- 60kg shelf load capacity
- Offside and Nearside configurations available for each
- Lockable storage
- Adjustable shelf heights

DEFENDER 110 2021

With a 100% extension drawer and adjustable drawer dividers, we created the perfect system to fit in your Land Rover Defender 110, making your life easier with day to day tasks. With an additional Locking Pod for extra secure storage.



**SINGLE DRAWER WITH
EXTENDED POD**

£1,299 + vat

**SINGLE DRAWER WITHOUT
EXTENDED POD**

£1,199 + VAT

SUV SYSTEM

- Range Rover, Land Rover Discovery, BMW X5, Toyota Land Cruiser, Nissan Pathfinder, Volvo XC90, Volvo XC70 Estate and more!

SUV DRAWER

£780 + VAT

- 1005mm x 914mm x 265mm (Width x Depth x Height)
- Internal: Single – 860mm x 880mm x 175mm | Twin – 385mm x 880mm x 175mm
- 100% extension lockable drawer
- Adjustable drawer dividers
- Rubber anti-slip deck surface

SUV DOG BOX

£450 + VAT

- Deck Dimensions: 597mm x 955mm x 550mm (Width x Depth x Deck Height)
- External Dimensions: 623mm x 998mm x 170mm
- Locking Door
- Quick attachment and removal to the drawers
- Available for both Single and Twin Drawer

SUV SLIDE

Single: £500 + VAT

- 1010mm x 916mm x 170mm (Width x Depth x Height)
- 75% load bed extension
- 150 kg load capacity
- Single hand opening mechanism
- Multiple locking positions for increased security

EXTENDED BOX *DEFENDER ONLY

£99 + VAT

- 385mm x 880mm x 175mm
- Optional telescopic drawer extended up to 1340mm
- Ideal for discreet gun storage



NEW GEARMATE PRODUCTS



GEAR CANOPY | From £1,250 + VAT

Gearmate have designed and manufactured the Gear Canopy to bring the latest innovative canopy for Pick-ups. Compatible, adaptable and durable the Gear Canopy is available for the Ford Ranger and available for pre-order for the Isuzu D-Max or Toyota Hilux 2021.

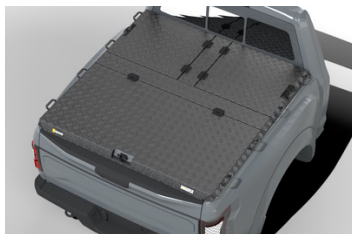
*Available with added features, roof rack system, roof ladder, bulk head lockers and more.



GEAR VAULT | From £339+ VAT

Protect your van from tool theft with the Gear vault, a versatile solution for the safe and secure storage of your valuable work tools.

Providing a secure and compact storage solution with a safety lock which has been tested and certified to give you peace of mind that your tools are safe and secure.



GEAR DECK | From £1,900 VAT

The Gear Deck has been specially designed and manufactured with the highest and most durable material, to keep your gear covered & secure.

The perfect choice for the pickup owner, a versatile cover featuring three side openings, giving pickup owners endless possibilities for the use of their vehicle.



GAME TRAY | £2,300 + VAT

The Game Tray, is the ultimate system for deer stalking, designed to load and transport carcasses safely onto your vehicle.

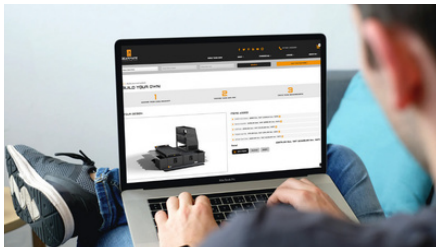
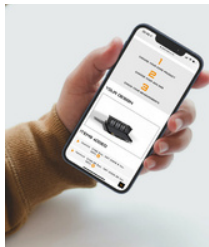
Never crawl into the back of your bed again. The entire load space is brought to you with the roller system on the leading edge of the tray.

*Available with an optional winch system to aid loading large game.



BUILD YOUR OWN SYSTEM

Not quite sure what you're looking for and want an idea on prices? Why not check out our Build Your Own feature? This feature enables you to test out the different combinations of storage that we offer, helping you to discover the best solution to suit your own needs. Just visit gearmate.co.uk/build-your-own-system/

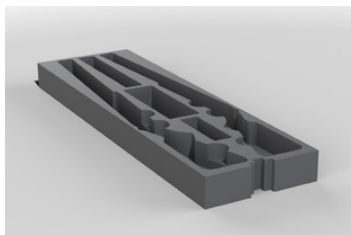


OTHER ACCESSORIES



HEAVY DUTY MOULDED FLOOR MATS | £39.99 + VAT

- The perfect tailored fit to your vehicle, easy to clean and 100% rubber.
- Nissan Navara
- Ford Ranger
- Suzuki D-Max
- Volkswagen Amarok



BESPOKE FOAM INSERT | £220 + VAT

Foam inserts are the perfect addition to our drawers! Providing protection of goods during transit and storage, it allows you to easily detect if any important item is missing and helps avoid damage to the drawers.





1000A JUMP STARTER

GB40 | **£90.95 + VAT**

Protection Case – **£13.95 + VAT**

NC-GB40 is designed for standard vehicle applications such as cars, vans, SUVs, motorcycles, ATVs, UTVs, lawn, garden & more



2000A JUMP STARTER

GB70 | **£184.95 + VAT**

Protection Case – **£22.95 + VAT**

NC-GB70 is designed for larger vehicles, such as vans & SUVs, as well as many diesel engines. Integrated heavy gauge cables efficiently transfer massive power surges



3000A JUMP STARTER

GB150 | **£271.95 + VAT**

Protection Case | **£27.95 + VAT**

NC-GB150 is designed for large diesel engines, almost all petrol engines and professional use by mechanics and for roadside assistance.



20000A 12V/24V JUMP

STARTER GB500 | **£1,627.95 + VAT**

Safely jump start a dead battery in seconds. Designed for most vehicles, including ATVs, lawn, mowers, motorcycles, cars, trucks, boats, RVs, tractors, equipment and more. The new, more powerful models are for diesel and high-displacement engines but are still safe on engines of all sizes.



OTHER ACCESSORIES



COOL ICE WCI 22L I
£97 + VAT

This highly efficient and lightweight icebox can keep ice for several days. It is made of a thick refrigeration grade foam insulation and has a unique labyrinth seal design. Take ice cold refreshment with you, wherever you're going!



COOL ICE WCI 42L I
£190 + VAT

Easy access and user-friendliness are at the forefront of the new Domestic Cool-Ice iceboxes' design. The new series of icebox accessories improve comfort while travelling, keep your icebox secure in a variety of locations, better organise your food and beverages and even provide somewhere to hold your drink or fishing rod!



COOLFREEZE CFX 35W I
£779 + VAT

Robust, efficient, and ready for action. Portable compressor 32L cooler and freezer. A powerful and uncompromising compressor cooler with special CFX electronics. Energy-saving and quiet operation.



GEAR BOX
£40 + VAT

The perfect accessory to add to your Gear Drawers. Slimline lockable box with handle, designed to fit seamlessly within Gear Drawers or on top of Gear Slides and Trays.

- Store & organise your ammo
- Provides additional security
- Avoid items rolling around your vehicle
- Handle and lock for ease of transport
- Dimensions 190 x 395





At Gearmate we aim to make life easier for our customers. We believe that key to this are innovation, problem solving, technology and most importantly bright people.

Our core product range is transferable to a variety of vehicles, once installed we hope you will be loaded for life.

UK owned and managed, based in Warwickshire, England.

Gearmate is part of a group of privately owned companies, that are OEM first tier supplier approved for companies such as ISUZU UK, Mitsubishi UK, Fiat Group, JCB and Cummins Inc.



Our design team is on hand to ensure you are provided with the exact design and functionality your system demands.

Please contact us to discuss your requirements.

Financial solutions available. Discounted prices available for trade and businesses.



CONTACT

We are partners with



01789 595200

sales@gearmate.co.uk

Unit 15, Kinwarton Farm Road, Arden Forest
Industrial Estate, Alcester, Warwickshire, B49 6EH

GEARMATE.CO.UK

