



COMPATIBLE WITH ALL PICK UP TRUCKS, A VARIETY OF SUV'S AND VANS





## ABOUT US

---

**Gearmate is a British designer, manufacturer and supplier of 4x4 accessories and load bed storage solutions.**

Our truck bed sliding trays and sliding drawers are designed to be practical and stylish while offering secure storage and easy access to all of your tools and equipment.

Gearmate's mission is to design, test, develop and manufacture high quality access and storage solutions to 4x4 vehicles. At the forefront of our philosophy is the genuine desire to develop practical, hard wearing and stylish accessories that help people work and play smarter.





# GEAR DRAWERS

Gearmate's range of drawers revolutionise your load space. Items can be stored safely and efficiently, ideal for professional and leisure use.

All Gear Drawers have an incredible 100% extension, enabling quick and easy access to all your items. Each drawer system comes fitted with dividers to ensure your load stays secure and organised, saving you time from needlessly searching.

Choose between our Single or Twin drawers without compromising your load space. Our drawer systems are designed to be tough, offering up to 150kg capacity per drawer and 800kg capacity on top of the deck.

You can choose between our 226mm height drawer (twin configuration), 300mm height drawer (single and twin configuration), 400mm height drawer (single and twin configuration) and 500mm height drawer (single and twin configuration).

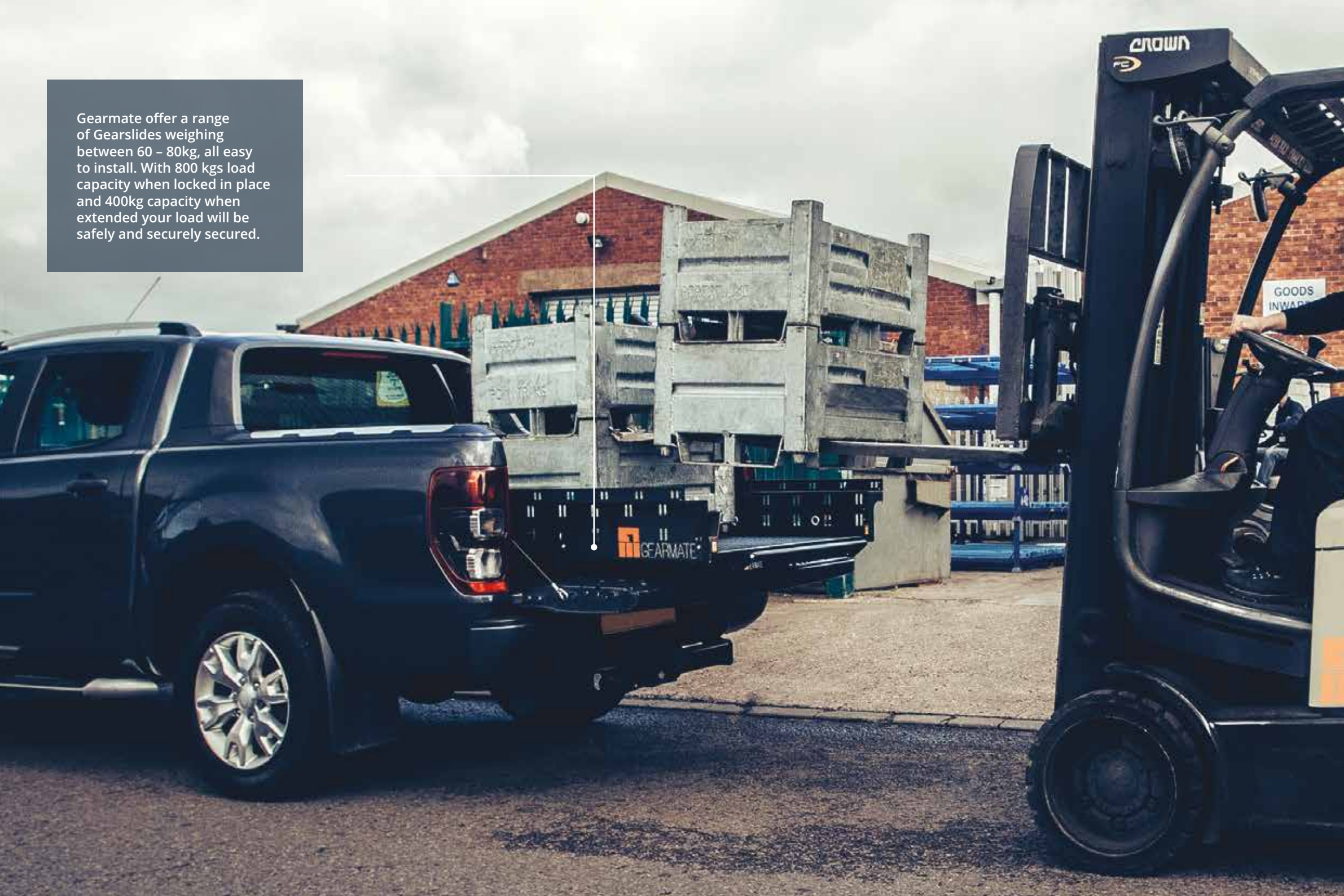


If you require additional security features or foam inserts to personalise your system please contact our sales team.





Gearmate offer a range of Gearslides weighing between 60 – 80kg, all easy to install. With 800 kgs load capacity when locked in place and 400kg capacity when extended your load will be safely and securely secured.



## GEARSLIDE

**The Gearslide offers an effective solution to accessing your load space.**

Never crawl into the back of your bed again, your entire load space is brought to you with the Gearslide's 75% extension.

Can be fitted with or without a bedliner with no drilling required. Hand operated locking lever with 4 incremental locking positions.

Re-positionable eye bolts connecting to side extrusion rails, ensure your load can be fully secured. Gearslide's are designed to be fully compatible with all Gearmate's range of accessories.

All Gearslide's are finished with a durable rubber chequer plate surface.





# T-SLIDE

Shaped to the contours of each truck bed, Gearmate's T-Slide utilises the maximum width of the available bed area.

The T-Slide is finished with durable, rubberised chequer plate for easy cleaning. Raised sides with multiple anchor points are ideal for bungee cords and tie downs, keeping your load in place.

Three locking positions, push button handle, 75% extension, 400kg Payload when extended.

No drill installation, quick removable slide, solid steel sub-frame.

Available for all major truck brands in both double cab and extended cab configuration.



- Maximum width slide
- Multiple anchor points
- Rubberised easy clean surface



## OPUS SYSTEM

With 100% extension and 75kg capacity per drawer, the Opus System is the perfect solution for tool storage and ease of access to your load.

Designed and manufactured by Gearmate in the UK, the Opus drawers with optional racking are the perfect tool for your work. Lockable drawers constructed from powder coated steel with a chequer rubber finish top.

Complete the Opus systems with our range of accessories. Add our infills for £99 (+VAT) to have a complete deck, using the whole space of your truck bed.





# FLEET VEHICLES

## Safe and secure storage solutions to suit your requirements!

Gearmate offer a range of commercial storage solutions, designed to provide easy and efficient access to your tools with increased security. A range of drawers, racking, sliding options and hardtops can be combined to suite your specific requirements.

Speak with one of our experts to build the right Gearmate system for your individual or fleet operator needs.

Discounted prices available for trade and fleet businesses.



Offering a variety of hardtops, including Gull Wings, Gearmate can bespoke your "fleet" system to exactly meet your needs. Space utilization and accessibility can be paramount and our design team can always find a solution.



## SUV'S

Up to 100% extendable drawer with adjustable drawer dividers, we have created the perfect system to fit in your SUV.

Optional telescopic storage compartment with lockable door, ideal for guns. Light weigh aluminium construction with rubber anti-slip surface. Compatible with our range of dog boxes and narrow slide to make the most of your SUV.

Check out our accessories range for more options.

Single Drawer system offering 90kg capacity.

Optional telescopic drawer extend up to 1340mm for discreet gun storage.





# HARDTOP

To complement our range of storage systems, we now offer three extremely practical hardtops for both professional and leisure use.

Choose between: gull wing, closed sided or sliding windows. Gearmate hardtops combine functionality and style, being compatible with all brands of pick-ups and available in a full range of UV resistant OEM approved colours.

Discount bundles available when purchased in conjuncture with any Gearmate slide or drawer system. Enquire for more information.

## Models



Closed Sided



Gull Wings



Sliding Windows



- Strong, functional and stylish design.
- Touch pad locking door handles, central locking, heated rear window, roof rails, interior lighting options.
- Complete protection for your load space.
- Available for all major brands.

Available in all OEM approved colours





# ROLL TOP COVER

The Gearmate Roll Top designed by our partners Tessera 4X4 offers the most secure and durable roll top on the market.

With 5 patented features, the Gearmate roll top incorporates high security interlocking aluminium tongues, weather proof protection, multiple locking positions, UV resistant surface finish and comes fully compatible with a range of Tessera and OEM accessories.

Gearmate have road tested a variety of roll tops, with the Tessera design leading the field in manufacture quality, practicality and value for money.

The Gearmate roll top is available for all leading truck brands in both double and extended CAB set ups.



Perfect protection from weather conditions



Without limits. Easy installation – No drill

- Patented high security retractable cover
- Weather proof and UV resistant
- Easy reach offset handle
- Compatible with a range of accessories
- No drill installation



# VAN STORAGE

Compatible with Ford Custom & Volkswagen T5/T6, Gearmate's modular van racking and storage systems provide a versatile solution for the safe and secure storage of your gear.

## Side Racking

Manufactured from black powder coated aluminum, Gearmate's racks offer a lightweight non-corrosive solution to keep your everyday items in place. Gearmate Racks can be fitted as a stand-alone item or alongside our Bulkhead Storage System and variety of Drawers.

## Bulkhead Storage System

Offering the best of both worlds our UK manufactured Bulkhead Storage System comprises of 4 shelves, 2 lockable storage cupboards and a 300mm deep lower drawer. Secured to the vehicle's bulkhead, the cupboards and drawer can be accessed via the side door with access to the racks through the rear.

## Deck Mounted Drawers

Gearmate Drawers are the most versatile systems on the market. Available in a range of depths, our twin or single drawers offer 100% extension. Choose between our Heavy Duty or Standard drawers.



The range includes: left and right-handed side racking a bulkhead storage system and a range of deck mounted drawers.

Each element is available separately or together as a total storage solution. All of our products are proudly manufactured in the UK from high-grade materials.



# PRODUCT SPECIFICATION



## GEAR DRAWERS | From £999 + VAT

Gear Drawers have an incredible 100% extension
Drawer dividers are fitted to ensure your load stays secure and organised
Up to 800kg loading capacity on each drawer system deck
Bespoke options, foam inserts and 4x4 accessories available
<b>226mm Twin Drawer   £999 + VAT</b>
1030mm x 1345mm x 226.5mm (Width x Depth x Height)
Internal: Twin - 399mm x 1300mm x 135mm
75kg capacity / 200kg deck capacity
Aluminium deck with rubber finish
Only available in twin
<b>300mm Twin Drawer   £999 + VAT</b>
1030mm x 1345mm x 300mm (Width x Depth x Height)
Internal: Twin - 399mm x 1300mm x 210mm
75kg capacity / 200kg deck capacity
Aluminium deck with rubber finish
Only available in twin
<b>Heavy Duty 300mm Drawer   Single: £1,299 + VAT   Twin: £1349 + VAT</b>
1030mm x 1345mm x 300mm (Width x Depth x Height)
Internal: Single - 875mm x 1260mm x 210mm   Twin - 399mm x 1260mm x 210mm
150kg capacity / 800kg deck capacity
Wooden deck with rubber matting on
Available in single and twin
<b>Heavy Duty 500mm Drawer   Single: £1,299 + VAT   Twin: £1449 + VAT</b>
1073mm x 1345mm x 501.5mm (Width x Depth x Height)
Internal: Single - 875mm x 1260mm x 390mm   Twin - 399mm x 1260mm x 390mm
150kg capacity / 800kg deck capacity

# PRODUCT SPECIFICATION



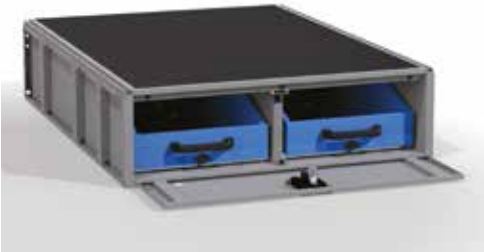
## GEARSLIDE | £799 + VAT

1024mm x 1326mm x 136mm (Width x Depth x Height)
800kg load rating when closed
400kg capacity extended load rating
Rubber deck
Compatible with a number of accessories



## T-SLIDE | £799 + VAT

1290 mm x 1310 mm x 100mm / 175 mm (Width x Depth x Height)
800kg load rating when closed
400kg capacity extended load rating
Rubber deck



## OPUS SYSTEM | £799 + VAT

1030mm x 1349mm x 300mm (Width x Depth x Height)
Internal: 400mm x 1200mm x 220mm
Incredible 100% extension
75kg capacity per drawer
Chequer rubber finish



# PRODUCT SPECIFICATION



Sizes vary from vehicle. E.g. Land Rover discovery dimensions

## SUV DRAWER | SINGLE: £699 + VAT | TWIN: £799 + VAT

1005mm x 914mm x 265mm (Width x Depth x Height)
Internal: Single - 860mm x 880mm x 175mm   Twin - 385mm x 880mm x 175mm
100% extension lockable drawer
Adjustable drawer dividers
Rubber anti-slip deck surface



## SPLIT SYSTEM | £1750 + VAT

Drawer & Slide & Locking pods
Items can be stored safely and efficiently
400mm external height gear drawer completed with a narrow slide



## ROLL TOP COVERS | From £1050 + VAT

Available for all double cab and extra cab
Multi locking positions
Weather proof
Black of aluminum finish
Compatible with roll bars and accessories

# PRODUCT SPECIFICATION



## HARDTOPS | From £1470 + VAT

Touch pad locking door handles - side panels and rear door
Central locking, UV resistant
Roof rails, heated rear window and 3rd brake light
Full range of OEM approved colours
Gull wing, solid sided or sliding windows



## VAN STORAGE

Compatible with Ford Custom & Volkswagen T5/T6
Heavy Duty Twin Drawer: Items can be stored safely and efficiently (£1349 + VAT)
Bulkhead Drawer, Locker & Rack: Provide additional storage options (£449 + VAT)
Rack: Provide additional storage options and security (£399 + VAT) each





# ACCESSORIES



## INFILL-PODS | £199 + VAT

The Gearmate Infill-Pods work off the side of your Gear Drawers, to tidy up your load space and give additional storage options.

Sizes vary depending on drawer/truck.  
Only available with Gear drawers.



## TAILGATE GAP FLAP | £79 + VAT

Covers the gap between the truck bed and tailgate, preventing items from dropping into the gap. To fit, the user must have infill pods.

Sizes vary depending on truck.  
Only available with Gear Drawers and infill pods.



## WHEEL-ARCH SURROUNDS | £199 + VAT

The maximum height surrounds with an added lip to extend over your wheel arch, giving you storage space.

Sizes vary depending on drawer/truck.  
Only available with the Gearslide.



## GEARSLIDE TOP | £649 + VAT

The Gearslide top is compatible with the drawer's systems. It gives you the maximum access to your load space with 75% extension, 200kg capacity, 4 locking positions for security and safety release catch to open and close.

Only available with the Gear Drawers.



# ACCESSORIES



## NARROW SLIDE | £499 + VAT

With 75% Extension, 200kg Load Capacity, a single hand operation, multiple locking positions for increased security.

Dimensions: 550mm x 1326mm x 136mm  
(Width x Depth x Height)



## RACKING | £299 + VAT (per rack)

Designed to give maximum access to your gear through gull wing windows. With 60kg shelf load capacity and offside and nearside configurations available for each.

Dimensions: Each Rack - 400mm x 980mm x 701.5mm  
(Width x Depth x Height)



## HAMMOCK | £189 + VAT

The Gearmate Hammock prevents your gear from moving around allowing quick, easy access and storage. Only available with the Gearslide.

Dimensions: 930mm x 400mm x 240mm  
(Width x Depth x Height)



## DOG BOX | £449 + VAT

The perfect accessory to keep your animal secure and comfortable. With locking door and quick attachment and removal to the drawers.

Dimensions:  
Lid open - 485mm x 950mm x 600/670mm  
Lid closed - 485mm x 950mm x 540mm  
(Width x Depth x Height)





# ACCESSORIES



## CENTRAL DIVIDER | £350 + VAT

The perfect accessory for those who wish to keep their truck organized, with a divided space to carry pets and goods securely. Only available with Gear drawers.



## CENTRAL SLIDE | £499 + VAT

Effective solution to access your load space. With 75% extension and 200kg Load Capacity, is the perfect accessory to complement with your racking.

Dimensions: 550mm x 1326mm x 136mm (Width x Depth x Height)



## RACKING & ROOF RACK | £258 + VAT

Our Racking was design to give you maximum access to your gear trough gull wings. For an extra security feature, add Gearmate Roof Rack.



## PROLIFT TAILGATE ASSIST | £165 + VAT

This accessory assists you on both opening and closing your tailgate. Easy to install with no drilling required.



# ACCESSORIES



## SUV SLIDE | £399 + VAT

Quick and easy access to your gear. Only compatible with SUV drawers.



## EXTENDED BOX | £99 + VAT

Optional telescopic drawer extended up to 1340mm, ideal for discreet gun storage.

Internal dimensions: 245mm x 910mm - 1300mm x 161mm (Width x Depth x Height)

At Gearmate we aim to make life easier for our customers. We believe that key to this are innovation, problem solving, technology and most importantly bright people.

Our core product range is transferable to a variety of vehicles, once installed we hope you will be loaded for life.







UK owned and managed, based in Warwickshire, England.

Gearmate is part of a group of privately owned companies, that are OE first tier supplier approved for companies such as ISUZU UK, Mitsubishi UK, Fiat Group, JCB and Cummins Inc., and that have been supplying the automotive sector for over 20 years.



Our design team is on hand to ensure you are provided with the exact design and functionality your system demands.

Please contact us to discuss your requirements.

Financial solutions available.



All images are for illustrative purposes, the final products may vary slightly dependent on your vehicle manufacturer and model.





## CONTACT

We are partners with



01789 595200

info@gearmate.co.uk

Unit 15, Kinwarton Farm Road, Arden Forest Industrial Estate  
Alcester, Warwickshire, B49 6EH



GEARMATE.CO.UK

